

# SHELTERING IN SACRAMENTO COUNTY

**What kind of shelter does the County provide to people experiencing homelessness?**

## 1 SHELTERING

### Emergency Shelter

Traditionally, emergency shelter for adults experiencing homelessness has been provided in congregate shelters. These shelters generally consist of large or semi-private spaces with bunk beds or cots where multiple people sleep.

The County has made investments in recent years to expand services at these sites and to reduce barriers, including provisions for pets, and mixed-gender populations.

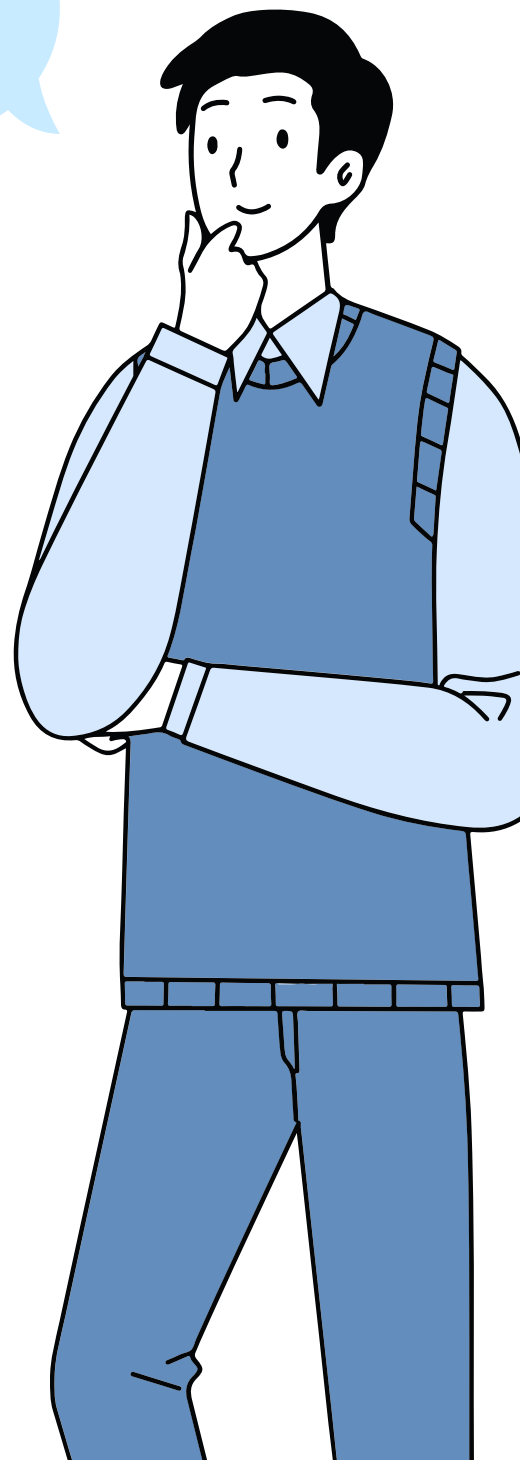
The County currently funds two large congregate shelter programs – the Salvation Army Center of Hope and the North A Street Shelter.

### Emergency Family Shelter

Family shelters consist of private or semi-private spaces, often that can be 'flexed' to accommodate very small or very large families where one family will shelter together, with shared spaces for dining, formal and informal gatherings, and youth activities.

The County currently funds two family shelter programs – the Bannon Street Family Shelter and the Next Move Family Shelter.

Families can register on the Emergency Family Shelter website at [dhaservices.saccounty.net/efs](https://dhaservices.saccounty.net/efs).



# SHELTERING IN SACRAMENTO COUNTY

## 2 TRANSITIONAL HOUSING

### Project RoomKey

Project RoomKey (PRK) was a statewide initiative launched in April 2020 in response to the Covid-19 pandemic.

Guests are provided a private motel room to shelter in with partners, pets and possessions. They are provided food, water, basic medical care, transportation to medical appointments and case management to help transition out of the motel into a safe environment.

There are currently two PRK motels open with more than 200 rooms. Over the course of the PRK program, more than 2,000 people have received shelter, medical support and case management services at PRK.

### Safe Stay Communities

Safe stay communities are temporary shelter settings for unhoused community members. These communities are built as a safer and more sanitary environment and offer critical services oriented towards exiting to permanent housing. Each site will include 24/7 security, case management services, on-site power, sanitation and food services.

The County has two Safe Stay Community sites that are slated to be up and running in winter 22/23: 8144 Florin Road and 7001 East Parkway. The sites can shelter up to a combined 181 people at any point in time.

### Scattered Shelter Sites (Full Service Rehousing Shelter Program)

The Full Service Rehousing Shelter (FSRS) serves as a scattered – site shelter model that can serve up to 115 people at a time. Housing services include housing location services, limited-term financial assistance, and housing stabilization case management. Each house has 24-hour in-house monitoring.

## 3 PERMANENT SUPPORTIVE HOUSING

- Flexible Housing Program: 300 households
- Flexible Supportive Rehousing: 250 households
- MHSA Built Permanent Supportive Housing Units: 221 households

