

# SHELTER & HOUSING IN SACRAMENTO COUNTY

## EMERGENCY SHELTER

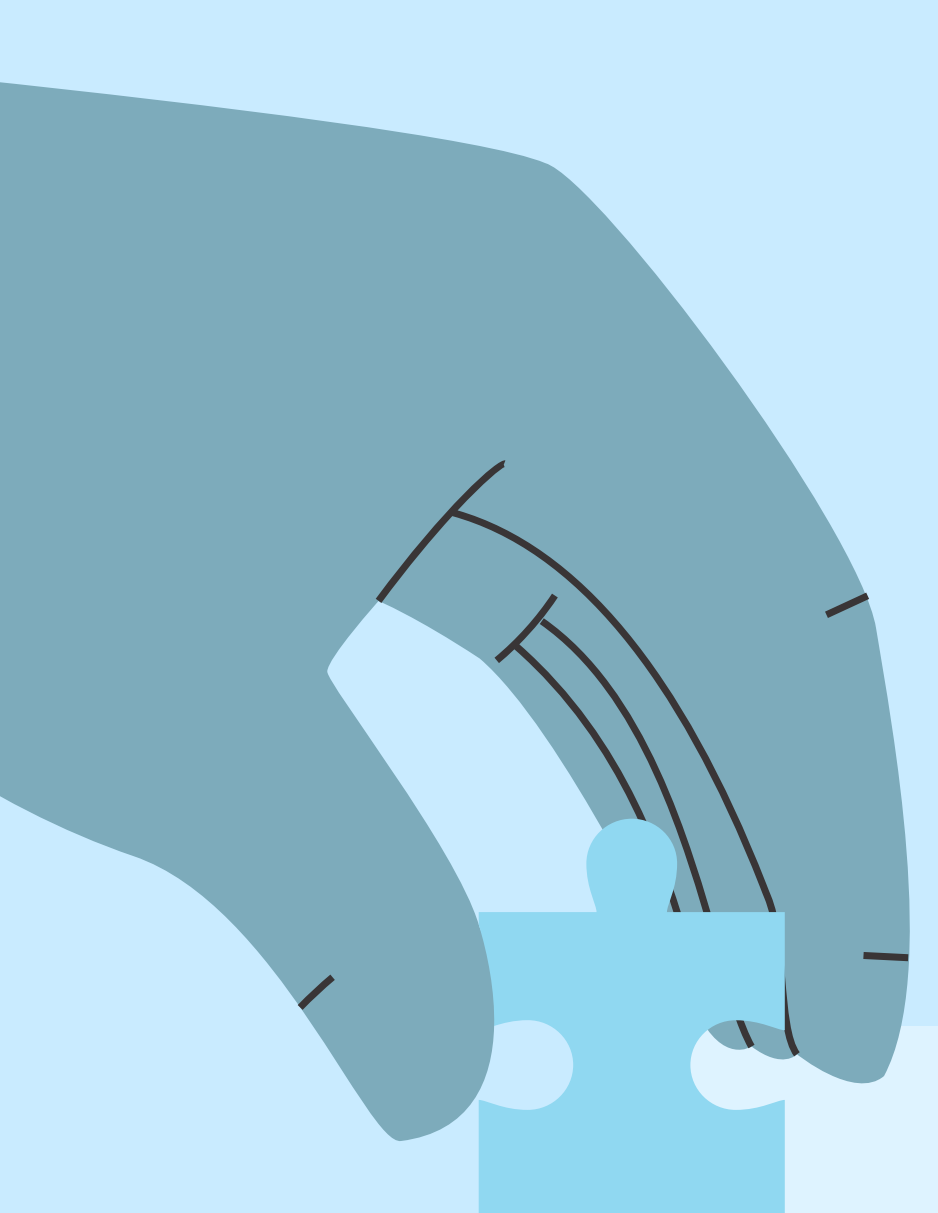
On any given night, congregate and family shelters, as well as weather respite and emergency motel vouchers,

CAN SHELTER UP TO  
**165**  
FAMILIES OR  
HOUSEHOLDS

AND UP TO  
**335**  
INDIVIDUALS



## TRANSITIONAL & PERMANENT HOUSING



**1**

Project  
RoomKey &  
Safe Stay  
Communities

CAN PROVIDE  
**381**  
ROOMS/TINY HOMES  
AT ANY POINT IN TIME

**2**

Transitional  
Housing for  
Families and  
Foster Youths

CAN PROVIDE SHELTER  
**25 FAMILIES  
& 80 YOUTHS**  
AT ANY POINT IN TIME

**3**

The County Supports  
Three Emergency  
Shelter & Transitional  
Support Programs

FOR UP TO  
**162**  
SURVIVORS OF DOMESTIC  
VIOLENCE & SEX TRAFFICKING  
AT ANY POINT IN TIME

**4**

Scattered-Site  
Shelter Homes

CAN SERVE UP TO  
**115 PEOPLE**  
AT ANY POINT IN TIME

**5**

The County  
Provides a  
Housing  
Program

FOR UP TO  
**48**  
ADULTS WHO ARE  
EXPERIENCING HOMELESSNESS  
AND PSYCHIATRIC DISABILITIES



**6**

The Flexible  
Supportive  
Rehousing  
Program

PROVIDES INTENSIVE CASE MANAGEMENT AND  
PERMANENT HOUSING AND SUBSIDY SERVICES TO  
**250 FREQUENT USERS**  
OF THE COUNTY JAIL AND BEHAVIORAL HEALTH SERVICES

**7**

Permanent  
Supportive  
Housing Sites

**SUPPORT UP TO 37 CLIENTS**  
AT ANY GIVEN TIME WHO ARE HOMELESS AND MEET A MEDICAL  
NECESSITY FOR MODERATE TO HIGH-INTENSITY SERVICE NEEDS

**8**

Through MHSA  
Dollars The  
County Funds

**221 UNITS** THAT PROVIDE  
PERMANENT HOUSING & **INTENSIVE SERVICES**  
TO ADULTS AND FAMILIES  
LIVING WITH SERIOUS MENTAL ILLNESS



For more information visit  
[schs.saccounty.gov](http://schs.saccounty.gov)